



*We treat everybody fairly*



PEARTREE SPRING  
PRIMARY SCHOOL

Article 32

The right to  
protection from  
work

Assembly

Monday 21<sup>st</sup> February

This week the assembly theme is:

# Fairtrade Fortnight

# Fairtrade





# What Is Fairtrade Fortnight?

Fairtrade Fortnight is an annual promotional campaign organised and funded by the Fairtrade Foundation to increase awareness of Fairtrade products.



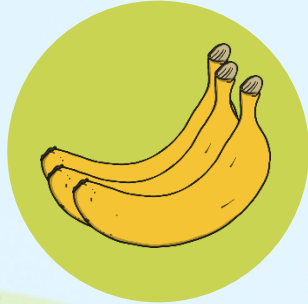
# Who Does Fairtrade Help?



- 1.4 million small scale farmers and workers in 1,140 producer organisations.
- Farmers and workers in 74 different countries.

What type of produce might be Fairtrade?

# Fairtrade Produce



bananas



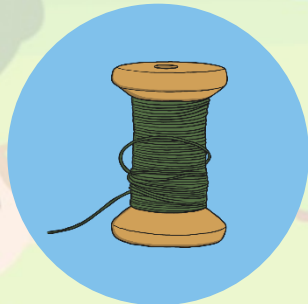
chocolate



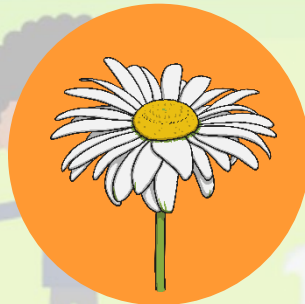
gold



coffee



cotton



flowers



sugar



tea



# What Does the Fairtrade Sign Mean?



Fairtrade is 50% owned by producers



Fairtrade works with a range of stakeholders, but the global system is 50% owned by producers representing farmer and worker organisations. With an equal voice, producers have a say in decision-making.



**Fairtrade Minimum Price**

For most Fairtrade goods there is a Fairtrade Minimum Price which is set to cover the cost of sustainable production for that product in that region.

**Fairtrade Premium**

The Fairtrade Premium is an additional sum of money which goes into a communal fund for workers and farmers to use to improve their social, economic and environmental conditions.

# Reflection

Think about those people around the world who grow and produce the things we eat and buy.

Think about whether they get a fair price for the things we buy from them.

Think about how buying Fairtrade goods means that we can help create a better and more just world.





# What More Can We Do?

- Hold a Fairtrade stall in school – it's a good way to encourage parents and carers to find out more.
- Try to spot as many different Fairtrade products as possible in the local supermarket.
- Make some Fairtrade cakes or biscuits – you could sell them as a fundraising activity.
- Research the possibility of using Fairtrade products in the school kitchen.
- Explore the possibility of being a Fairtrade school. Think about ways the whole community can get involved and change to Fairtrade products.



## School Reflection

This is our school,  
Let peace dwell here,  
Let the rooms be full of contentment.

Let love abide here,  
Love of one another,  
Love of mankind,  
Love of life itself.

Let us remember  
That as many hands build a house,  
So many hearts make a school  
Help us to learn, play and share together.

We hope our school will be a place of great discovery, adventure and creativity.

May it be a place where we love to learn and where we learn to love,  
A place where everyone is respected and all are deeply valued.



Monday Assembly

Thank you